

# VISION U

Universal  
Auto-Positioning





*Small footprint  
suitable for  
modest rooms*

# VISION U

## High-performance digital imaging

---

**Vision U** is the latest generation, universal digital radiography (**DR**) system for a wide range of general and specialist diagnostic imaging applications. Programmable auto-positioning of the X-ray tube and large (43x43 cm) digital flat panel detector enable efficient and flexible imaging of all anatomies of both mobile and immobile patients. Direct digital acquisition with optimally adjusted, anatomy-specific imaging and image processing

protocols produces crystal clear visualisations of all imaged anatomies at significantly lower doses of radiation compared to film and **CR** devices. A single-system console seamlessly controls all active system components meaning unparalleled user ergonomics and high workflow automation. Whether you need general inpatient or traumatised immobile patient imaging, **Vision U** provides high patient throughput at outstanding diagnostic quality.



Autständig  
Image Quality

**VISION U**





## Available on **VISION U**

- Motorised auto-positioning of the device in all directions
- Programmable positions available on a remote-control device
- High-frequency generator controlled from the main system console
- High-quality digital flat panel detectors: 43x43cm fixed or 43x35cm portable
- Automated exam set-up with patient search and worklist load
- Anatomy specific exposure parameters and image processing
- DICOM archiving on PACS and CD, multi-image printing



Up to 5 field AEC



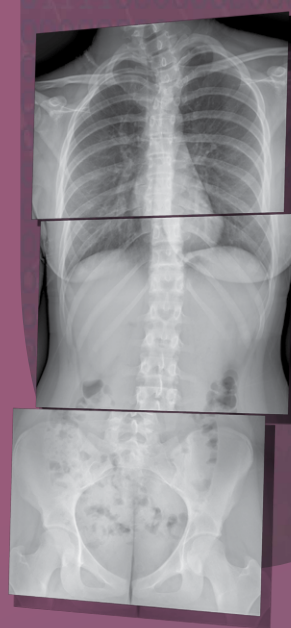
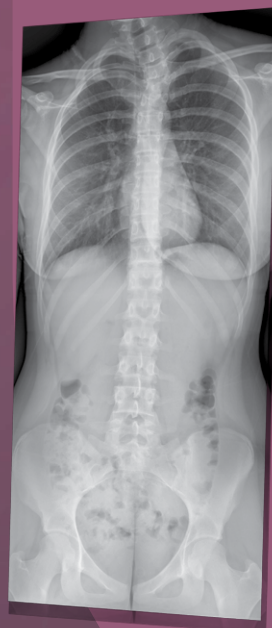
Optional accessories  
Image stitching  
patient stand



**Motorised stitching  
of up to 4 images**  
(up to 150cm of patient coverage)

## Image stitching module

Long anatomy imaging from several already acquired individual exposures with the Automatic Stitching Module allows you to visualise long anatomy exposures such as spine in a single image and perform measurements much larger than the active area of your FPD.



Whole spine from 3X exposures

# AVANSE DR



Through a highly-integrated digital acquisition console, **Avanse DR** provides exceptional imaging ergonomics, diagnostic flexibility and reliability. Available in configurations with fixed, portable wired or portable wireless flat panel detectors and with a range of advanced imaging functions, **Avanse DR** is an ideal solution for digital upgrade of your diagnostic radiography capability.

**Avanse DR** is a state-of-the-art digital imaging system with the latest generation flat panel detectors for digital upgrade of radiography devices. It seamlessly transforms your existing film device into a digital radiography system with all the advantages of digital imaging including higher image quality, lower doses of radiation, shorter examination times and lower operating costs.

## A global partner for diagnostic imaging

Innovation is the core of everything that we do at Visaris. For over 15 years we have been dedicated to helping doctors and medical practitioners in providing the best diagnostics and treatment to their patients. With installations in over 20 countries on 5 continents, our systems are made to be reliable, user friendly and efficient.

Our products are constantly improved to be safer, with lower doses of radiation and automatic

interlocking features that prevent unwanted patient exposures. Our proprietary software with fully automated operation significantly reduces examination times without compromising the imaging quality. All our equipment is subjected to extensive testing, has regulatory approvals (CE, FDA...) and adheres to relevant ISO safety standards.



*Visaris Team*



@visariss Serbia



@visarishq



@visarislinkedin



@visarisyoutube